



MULTIPLE SEWERSHED PACKAGE 18A (WILLOW SPRINGS)
Solicitation Number: CO-00398
SAWS Sewer Job No.: 20-4518

ADDENDUM 1
September 30, 2021

To Bidder of Record:

This addendum, applicable to work referenced above, is an amendment to the proposal and plans and specifications and as such will be a part of and included in the Contract Documents. Acknowledge receipt of this addendum by entering the Addendum number and issue date on the space provided in submitted copies of the proposal.

MODIFICATIONS TO PLANS

1. Plan sheet 13 – Replace sheet dated 9/2/2021 with attached sheet dated 9/23/2021.

RESPONSES TO QUESTIONS

1. Can you let me know the approximate inside diameter of each manhole and also the approximate depth of each manhole? I've looked through plans and all I could find was the depth of MH ID 31481, which is about 17' deep. The 4 manholes are MH ID 31481, MH 31307, MH 31677, and MH 46233.

Answer: Please see attached revision to plan sheet 13 attached to this addendum for information on manhole depths and diameters.

Michael Persyn, P.E.
K Friese + Associates, Inc. (TBPE F-6535)



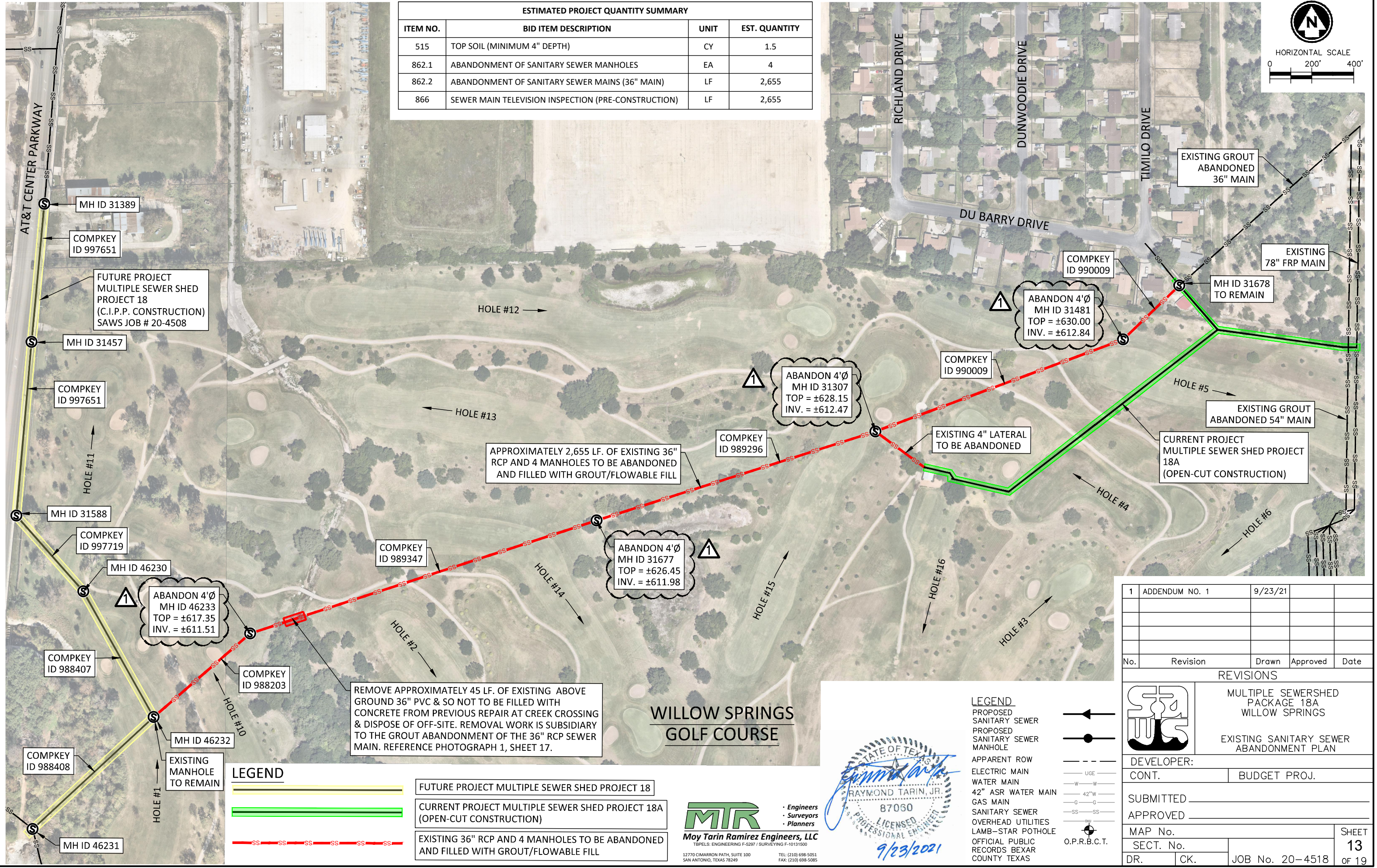
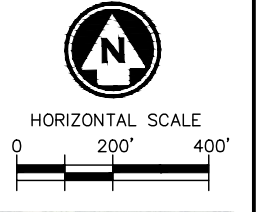
9/30/21

END OF ADDENDUM 1

This Addendum, including this one (1) page, is two (2) pages with attachments in its entirety.

Attachments: Plan sheet 13

ESTIMATED PROJECT QUANTITY SUMMARY			
ITEM NO.	BID ITEM DESCRIPTION	UNIT	EST. QUANTITY
515	TOP SOIL (MINIMUM 4" DEPTH)	CY	1.5
862.1	ABANDONMENT OF SANITARY SEWER MANHOLES	EA	4
862.2	ABANDONMENT OF SANITARY SEWER MAINS (36" MAIN)	LF	2,655
866	SEWER MAIN TELEVISION INSPECTION (PRE-CONSTRUCTION)	LF	2,655



WILLOW SPRINGS GOLF COURSE

1	ADDENDUM NO. 1	9/23/21			
No.	Revision	Drawn	Approved	Date	

REVISIONS	
1	MULTIPLE SEWERSHED PACKAGE 18A WILLOW SPRINGS
2	EXISTING SANITARY SEWER ABANDONMENT PLAN

DEVELOPER:	
CONT.	BUDGET PROJ.
SUBMITTED _____	
APPROVED _____	
MAP No.	SHEET 13
SECT. No.	OF 19
DR.	CK.
JOB No. 20-4518	

LEGEND	
	FUTURE PROJECT MULTIPLE SEWER SHED PROJECT 18
	CURRENT PROJECT MULTIPLE SEWER SHED PROJECT 18A (OPEN-CUT CONSTRUCTION)
	EXISTING 36" RCP AND 4 MANHOLES TO BE ABANDONED AND FILLED WITH GROUT/FLOWABLE FILL

MTR Engineers Surveyors Planners
Moy Tarin Ramirez Engineers, LLC
 TBPELS: ENGINEERING F-5207 / SURVEYING F-10131500
 12770 CIMARRON PATH, SUITE 100 SAN ANTONIO, TEXAS 78249 TEL: (210) 698-5051 FAX: (210) 698-5085

STATE OF TEXAS
 RAYMOND TARIN, JR.
 87060
 LICENSED PROFESSIONAL ENGINEER
 9/23/2021

LEGEND

	PROPOSED SANITARY SEWER
	PROPOSED SANITARY SEWER MANHOLE
	APPARENT ROW ELECTRIC MAIN
	WATER MAIN
	42" ASR WATER MAIN
	GAS MAIN
	SANITARY SEWER
	OVERHEAD UTILITIES
	LAMB-STAR POTHOLE
	OFFICIAL PUBLIC RECORDS BEXAR COUNTY TEXAS